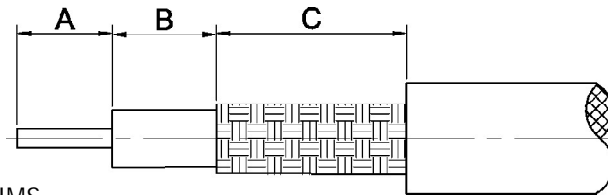


Recommended Stripping Dimensions

Lighthouse Technologies, Inc.



FLEXIBLE CABLE STRIPPING DIMS

Line #	RG-58/59			RG-316/179			RG-178/196			RG-8U/213			Notes
	A	B	C	A	B	C	A	B	C	A	B	C	
1				2.0	1.2	5.0	2.0	1.2	5.0				
2				2.0	1.7	5.0	2.0	1.7	5.0				
3				2.0	3.0	5.0	2.0	3.0	5.0				
4				2.0	1.5	5.0	2.0	1.5	5.0				
5				2.0	2.0	5.0	2.0	2.0	5.0				
6				2.3	3.2	5.0	2.3	3.2	5.0				
7	4.0	4.5	7.5	2.5	1.7	6.5	2.5	1.7	6.5				
8	4.0	4.5	7.5	2.6	2.9	6.5	2.6	2.9	6.5				
9	4.0	4.5	7.5	2.5	2.3	5.2	2.5	2.3	5.2				
10	2.5	3.8	10	2.5	1.5	4.5	3.8	2.5	9				
11	4.0	4.5	7.5	2.0	2.7	5.2	2.0	2.7	5.2				
12	4.0	4.5	7.5	3.1	1.5	5.2	3.1	1.5	5.2				
13	4.0	4.5	7.5	2.6	1.9	6.5	2.6	1.9	6.5				
14				1.5	1.7	7.5							
15				1.5	9.0	8.0							
16	4.0	4.5	7.5	2.5	3.1	5.2							
17	4.1	5.6	8.3	4.1	5.6	6.8							
18	4.0	3.7	8.3	2.5	3.1	5.2							
19	3.0	1.0	4.0										
20	6.5	5.0	1.5										
21	3.5	0.0	4.0										SEE FIGURE 1
22	4.0	3.9	8.3	4.0	3.8	8.3							
23	4.0	5.2	8.3	4.0	5.1	6.8							
24	4.0	2.5	8.3	2.0	1.0	6.0							
25	6.0	1.6	8.3	3.0	3.0	7.0							
26	3.0	8.0	7.0	3.0	7.0	8.0							
27				3.0	5.0	8.0							
28	13.8	8.8	8.3	19.0	2.5	6.5							
29	3.5	1.5	7.0	3.5	1.5	7.0							
30	15.5	1.5	9.0										
31	3.0	8.0	4.0										
32	4.5	2.0	0.0										SEE FIGURE 2
33	4.0	4.5	7.5	5.0	9.0	5.0							
34	3.5	9.5	8.0	4.0	9.0	5.0							
35	3.5	4.0	7.5	5.0	9.0	5.0							
36	3.5	3.0	4.5	5.0	9.0	5.0							
37				6.0	2.0	6.0							
38	5.0	8.0	9.0	5.0	8.0	9.0							
39	4.5	4.5	4.5							4.5	3.5	7.5	SEE FIGURE 3 & 4
40	CONTACT THE FACTORY												

DIMENSIONS ARE IN MILLIMETERS

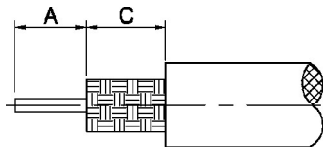


FIGURE 1

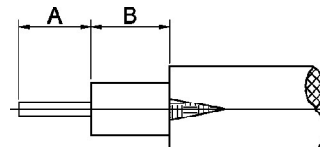


FIGURE 2

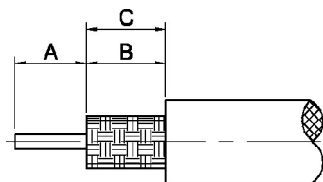


FIGURE 3

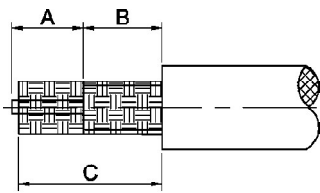
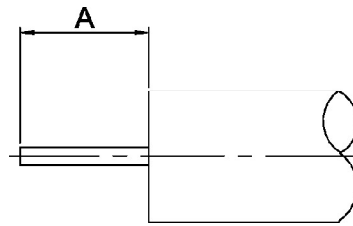


FIGURE 4



SEMI-RIGID CABLE STRIPPING DIMS

Line #	SR-.034		SR-.047		SR-.086		SR-.141		NOTES
	A	B	A	B	A	B	A	B	
1	2.8	0.0	2.8	0.0	2.8	0.0	2.8	0.0	
2	1	1	1	1	1.5	0.0	1.5	0.0	SEE FIGURE 6
3	2	1	2	1	2	0	2	0	SEE FIGURE 6
4	3	0	3	0	3	0	3	0	
5	2	1	2	1	2.5	0	2.5	2	SEE FIGURE 6
6	4	0	4	0	4	0	4	0	
7	4	1	4	1	4	0	4	0	SEE FIGURE 6
8	CONTACT THE FACTORY								

DIMENSIONS ARE IN MILLIMETERS

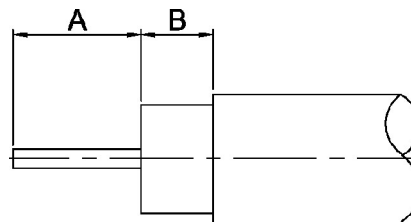


FIGURE 5