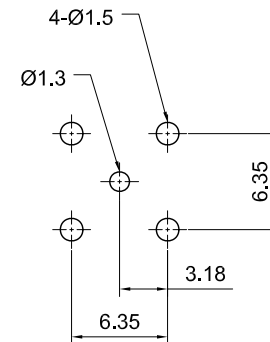
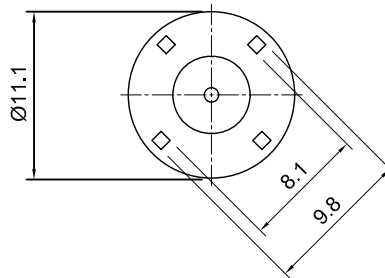
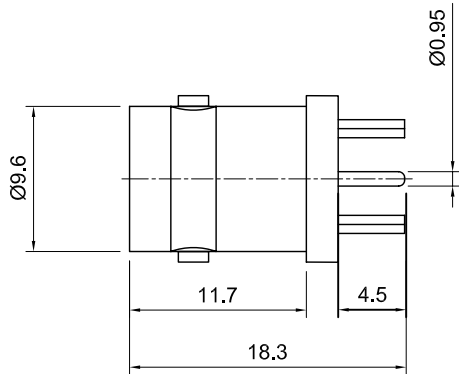


<b>Tolerances</b> 1-20=+/-0.2 20-30=+/-0.3 30-40=+/-0.4 40-50=+/-0.5 50-100=+/-0.75 100-300=+/-1.5 Angles=+/-1 <b>Dimensions are in Millimeters</b>	Revisions	Approved	Date
	Description/Approved/Date	M.H.	10/03/01
		Checked	Date
		M.H.	10/03/01
		Drawn	Date
		T.J.A.	10/03/01
NOTES (plating thickness in micro-inches): 1. Per QQ-B-626 2. Per QQ-S-764 3. Per QQ-C-530 4. Per QQ-B-750 5. Per MIL-P-19468 6. Per ZZ-R-765 7. Per WW-T-799 8. Gold pl. 5 min. over nickel pl. 50 min. over copper strike 9. Nickel pl. 100 min. over copper strike 10. Per QQ-P-35 11. Gold pl. 5 min. over nickel pl. 50 min. over copper strike			



RECOMMENDED PCB LAYOUT

ITEM	MATERIAL	FINISH	<b>Lighthouse Technologies, Inc.</b> 5640 Kearny Mesa Road, Suite N San Diego, California 92111 Part Number: <b>LTI-BSF54ZND</b>		
Connector Body	Brass, Note 1	Nickel, Note 9			
Center Contact: F	Brass, Note 1	Gold, Note 11			
Insulation	Delrin	None			
Ferrule			Description		
Gasket			BNC PCB Jack, Short Body (13.8 mm of PCB)		
Hex Nut			Nickel plated brass body, Delrin dielectric.		
Lock Washer			Scale	Drawing No.	File Name
			2:1		BSF54ZND