

All components used in this connector conform to RoHS standards.



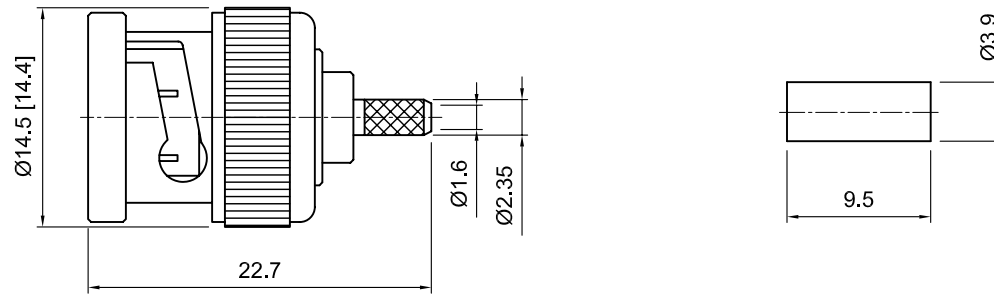
**Tolerances**

- 1-20=+/-0.2
- 20-30=+/-0.3
- 30-40=+/-0.4
- 40-50=+/-0.5
- 50-100=+/-0.75
- 100-300=+/-1.5
- Angles=+/-1

Dimensions are in Millimeters

| Revisions<br>Description/Approved/Date  | Approved<br>M.H. | Date<br>04/15/99 |
|---|------------------|------------------|
|   | Checked<br>M.H.  | Date<br>04/14/99 |
|   | Drawn<br>K.R.E.  | Date<br>04/12/99 |
| NOTES (plating thickness in micro-inches):<br>1. Per QQ-B-626<br>2. Per QQ-S-764<br>3. Per QQ-C-530<br>4. Per QQ-B-750<br>5. Per MIL-P-19468<br>6. Per ZZ-R-765<br>7. Per WW-T-799<br>8. Gold pl. 5 min. over nickel pl. 50 min. over copper strike<br>9. Nickel pl. 100 min. over copper strike<br>10. Per QQ-P-35<br>11. Gold pl. 3 min. over nickel pl. 50 min. over copper strike |                  |                  |

Approved by:  
Date:



| ITEM                   | MATERIAL                | FINISH         |
|------------------------|-------------------------|----------------|
| Connector Body         | Brass, Note 1           | Nickel, Note 9 |
| Center Contact: Female | Brass, Note 1           | Gold, Note 11  |
| Insulation             | Teflon, Note 5          | None           |
| Ferrule                | Annealed Copper, Note 7 | Same as body   |
| Gasket                 | --                      | --             |
| Hex Nut                | --                      | --             |
| Lock Washer            | --                      | --             |

**Lighthouse Technologies, Inc.**

5640 Kearny Mesa Road, Suite N  
San Diego, California 92111

Part Number:  
**LTI-BSM11NT-316**

|  |               |           |
|--|---------------|-----------|
| Description                                    |               |           |
| BNC crimp plug for RG-316. Nickel plated brass |               |           |
| body, teflon dielectric.                       |               |           |
| Scale  | Drawing No.   | File Name |
| 2:1  | BNC/BSM11-316 | BSM11-316 |